



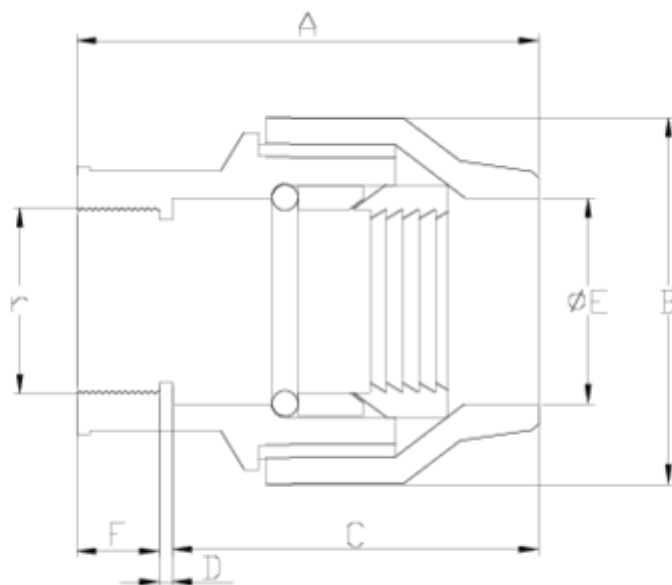
## Brass pressure fittings

### Straight coupling, female threaded ITEM 151



Ref.	Description	Net Weight	Vol. (m <sup>3</sup> )	Gross Weight	Units Box
1020047	BRASS STRAIGHT COUPL,F.THR. 25-3/4"	0.131	0.00473	5.35	40
1020048	BRASS STRAIGHT COUPL,F.THR. 32-1"	0.221	0.00892	6.81	30
1020049	BRASS STRAIGHT COUPL,F.THR 40-1 1/4"	0.326	0.01553	14.98	45
1020050	BRASS STRAIGHT COUPL,F.THR 50-1 1/2"	0.546	0.00892	10.02	18
1020051	BRASS STRAIGHT COUPL,F.THR. 63-2"	0.927	0.00892	5.75	6
1020052	BRASS STRAIGHT COUPL,F.THR. 75-2 1/2"	1.473	0.00892	9.03	6
1020053	BRASS STRAIGHT COUPL,F.THR. 90-3"	2.292	0.01553	9.50	4
1020054	BRASS STRAIGHT COUPL,F.THR. 110-4"	3.274	0.00892	6.74	2
1020046	BRASS STRAIGHT COUPL,F.THR. 20-1/2"	0.083	0.00473	5.07	60





## ITEM 151 | Straight coupling, female threaded

Código	f tubo-R	Peso (g)	A	B	C	D	E	F	r	PN	TIPO ROSCA
20046	20-1/2"	100	44.5	35	32	2.5	21	10	1/2"	PN25	BSP
20047	25-3/4"	159	51	41.5	36	2.5	26	12.5	3/4"	PN25	BSP
20048	32-1"	213	60.3	49.5	42	2.3	33	16	1"	PN25	BSP
20049	40-1 1/4"	369	66	61	47.7	1.8	41.8	16.5	1 1/4"	PN25	BSP
20050	50-1 1/2"	586	67	74.3	50	1.3	51.2	15.7	1 1/2"	PN25	BSP
20051	63-2"	1002	86.5	91.2	65	3.5	64	18	2"	PN25	BSP
20052	75-2 1/2"	1469	135	88	99.8					PN25	BSP
20053	90-3"	2240	154	104	111.4					PN25	BSP
20054	110-4"	3345	179	129	145					PN25	BSP



## PRODUCT DOCUMENTS



## PRODUCT CERTIFICATES

## COMPANY CERTIFICATES

