



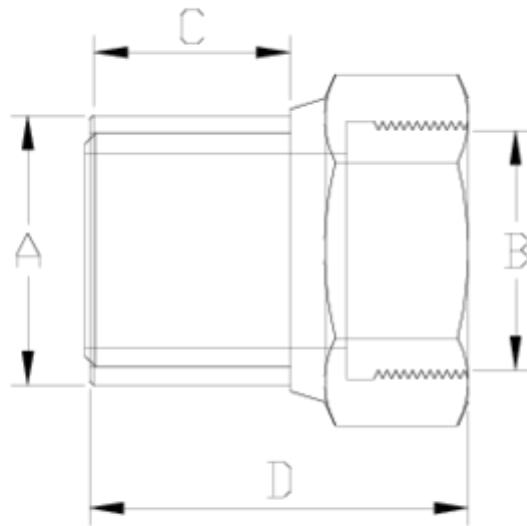
Electrofusion fittings/Welding fittings

Transition adapter, female threaded ITEM 168



Ref.	Description	Net Weight	Vol. (m ³)	Gross Weight	Units Box
1019223	TRANSITION ADAPTER,F. THREAD 32-1"	0.194	0.01553	10.01	50
1019224	TRANSITION ADAPTER,F. THREAD 32-1 1/4"	0.275	0.01553	8.59	30
1019225	TRANSITION ADAPTER,F. THREAD 50-1 1/2"	0.353	0.01553	7.39	20
1019226	TRANSITION ADAPTER,F. THREAD 63-2"	0.606	0.00892	6.25	10



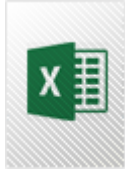


ITEM 168 | Transition adapter, female threaded

Código	f tubo-A-B	Peso (g)	C	D	PN	TIPO ROSCA
19223	32-1"	250	35	71	PN16	BSP
19224	40-1 1/4"	397	39	77	PN16	BSP
19225	50-1 1/2"	589	43	81	PN16	BSP
19226	63-2"	800	47	89	PN16	BSP



PRODUCT DOCUMENTS



PRODUCT CERTIFICATES

COMPANY CERTIFICATES

