



## Clamp saddles

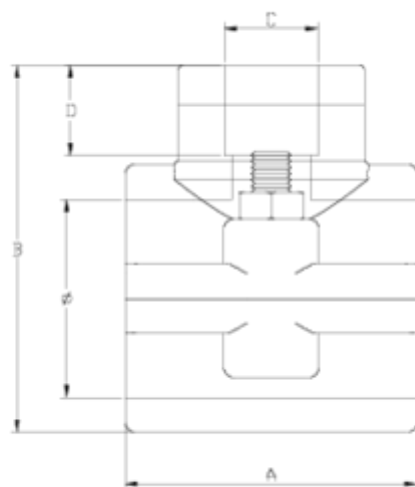
# Reinforced clamp saddle 2 screws

## ITEM 127



Ref.	Description	Net Weight	Vol. (m <sup>3</sup> )	Gross Weight	Units Box
1003149	PP CLAMP SADDLE REINF. 20-1/2"	0.085	0.02244	7.46	80
1003150	CLAMP SADDLE REINFORCED 20-3/4"	0.086	0.02244	7.59	80
1003053	PP CLAMP SADDLE REINF. 25-1/2"	0.078	0.02244	6.95	80
1003054	PP CLAMP SADDLE REINF. 25-3/4"	0.081	0.02244	7.17	80
1003055	PP CLAMP SADDLE REINF. 32-1/2"	0.115	0.02244	7.53	60
1003056	PP CLAMP SADDLE REINF. 32-3/4"	0.114	0.02244	7.51	60
1003124	PP CLAMP SADDLE REINF. 32-1"	0.139	0.02244	8.98	60
1003057	PP CLAMP SADDLE REINF. 40-1/2"	0.143	0.03129	7.74	50
1003058	PP CLAMP SADDLE REINF. 40-3/4"	0.140	0.03129	7.59	50
1003059	PP CLAMP SADDLE REINF. 40-1"	0.150	0.03129	8.07	50
1003060	PP CLAMP SADDLE REINF. 50-1/2"	0.133	0.03129	6.56	45
1003061	PP CLAMP SADDLE REINF. 50-3/4"	0.133	0.02244	6.58	45
1003062	PP CLAMP SADDLE REINF. 50-1"	0.145	0.02244	7.11	45





## ITEM 127 | Reinforced clamp saddle 2 screws

Código	f tubo - C	Peso (g)	A	B	D	PN	TIPO ROSCA
03149	20 - 1/2"	59	43	48	16	PN16	BSP
03150	20 - 3/4"	62	43	48	17	PN16	BSP
03053	25 - 1/2"	72	45	52	16	PN16	BSP
03054	25 - 3/4"	71	45	52	17	PN16	BSP
03055	32 - 1/2"	105	49	60	16	PN16	BSP
03056	32 - 3/4"	107	49	60	17	PN16	BSP
03124	32 - 1"	148	59	72	21	PN16	BSP
03057	40 - 1/2"	122	59	72	16	PN16	BSP
03058	40 - 3/4"	130	59	72	17	PN16	BSP
03059	40 - 1"	138	59	72	21	PN16	BSP



## ITEM 127 | Reinforced clamp saddle 2 screws

03060	50 - 1/2"	135	52	81	16	PN16	BSP
03061	50 - 3/4"	135	52	81	17	PN16	BSP
03062	50 - 1"	147	52	81	21	PN16	BSP



## PRODUCT DOCUMENTS



## PRODUCT CERTIFICATES

## COMPANY CERTIFICATES

