



Clamp saddles

Reinforced clamp saddle 4 screws ITEM 129



Ref.	Description	Net Weight	Vol. (m ³)	Gross Weight	Units Box
1003144	PP CLAMP SADDLE REINF. 50-1 1/4"	0.287	0.04879	13.48	45
1003063	PP CLAMP SADDLE REINF. 63-1/2"	0.246	0.04879	15.79	60
1003064	PP CLAMP SADDLE REINF. 63-3/4"	0.242	0.04879	14.46	60
1003065	PP CLAMP SADDLE REINF. 63-1"	0.250	0.04879	16.05	60
1003066	PP CLAMP SADDLE REINF. 63-1 1/4"	0.268	0.06347	17.13	60
1003067	PP CLAMP SADDLE REINF. 63-1 1/2"	0.286	0.06347	18.25	60
1003068	PP CLAMP SADDLE REINF. 75-1/2"	0.307	0.04460	11.77	35
1003069	PP CLAMP SADDLE REINF. 75-3/4"	0.313	0.04460	11.77	35
1003070	PP CLAMP SADDLE REINF. 75-1"	0.318	0.04460	12.13	35
1003071	PP CLAMP SADDLE REINF. 75-1 1/4"	0.340	0.04460	12.92	35
1003072	PP CLAMP SADDLE REINF. 75-1 1/2"	0.355	0.04460	13.49	35
1003073	PP CLAMP SADDLE REINF. 75-2"	0.392	0.04879	14.73	35
1003074	PP CLAMP SADDLE REINF. 90-1/2"	0.349	0.04117	11.44	30
1003075	PP CLAMP SADDLE REINF. 90-3/4"	0.354	0.04117	11.59	30
1003076	PP CLAMP SADDLE REINF. 90-1"	0.358	0.06347	11.71	30
1003077	PP CLAMP SADDLE REINF. 90-1 1/4"	0.385	0.04460	12.51	30
1003078	PP CLAMP SADDLE REINF. 90-1 1/2"	0.407	0.06347	13.25	30
1003079	PP CLAMP SADDLE REINF. 90-2"	0.434	0.06347	14.00	30
1003116	PP CLAMP SADDLE REINF. 110-1/2"	0.485	0.06150	13.35	25
1003080	PP CLAMP SADDLE REINF. 110-3/4"	0.481	0.06150	13.24	25
1003081	PP CLAMP SADDLE REINF. 110-1"	0.483	0.06150	13.30	25
1003082	PP CLAMP SADDLE REINF. 110-1 1/4"	0.504	0.06347	13.81	25





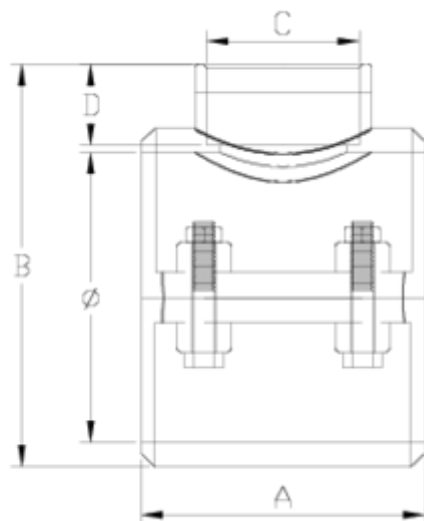
Clamp saddles

Reinforced clamp saddle 4 screws ITEM 129



Ref.	Description	Net Weight	Vol. (m ³)	Gross Weight	Units Box
1003083	PP CLAMP SADDLE REINF. 110-1 1/2"	0.512	0.06347	14.01	25
1003084	PP CLAMP SADDLE REINF. 110-2"	0.555	0.06150	12.25	20
1003106	PP CLAMP SADDLE REINF. 110-2 1/2"	0.636	0.06150	13.89	20
1003120	PP CLAMP SADDLE REINF. 125-1/2"	0.580	0.06150	17.20	28
1003085	PP CLAMP SADDLE REINF. 125-3/4"	0.602	0.06150	17.81	28
1003086	PP CLAMP SADDLE REINF. 125-1"	0.588	0.06150	17.42	28
1003087	PP CLAMP SADDLE REINF. 125-1 1/4"	0.599	0.06150	17.71	28
1003088	PP CLAMP SADDLE REINF. 125-1 1/2"	0.624	0.06150	18.43	28
1003089	PP CLAMP SADDLE REINF. 125-2"	0.625	0.06150	18.45	28
1003108	PP CLAMP SADDLE REINF. 125-2 1/2"	0.708	0.06150	18.64	25





ITEM 129 | Reinforced clamp saddle 4 screws

Código	f tubo - C	Peso (g)	A	B	D	PN	TIPO ROSCA
03144	50 - 1 1/4"	306	70	99	23	PN16	BSP
03063	63 - 1/2"	245	70	94	16	PN16	BSP
03064	63 - 3/4"	246	70	94	17	PN16	BSP
03065	63 - 1"	257	70	99	21	PN16	BSP
03066	63 - 1 1/4"	267	70	99	23	PN16	BSP
03067	63 - 1 1/2"	284	70	99	31	PN16	BSP
03068	75 - 1/2"	325	85	112	16	PN10	BSP
03069	75 - 3/4"	319	85	112	17	PN10	BSP
03070	75 - 1"	328	85	112	21	PN10	BSP
03071	75 - 1 1/4"	346	85	114	23	PN10	BSP



ITEM 129 | Reinforced clamp saddle 4 screws

03072	75 - 1 1/2"	353	85	114	31	PN10	BSP
03073	75 - 2"	392	85	118	38	PN10	BSP
03074	90 - 1/2"	348	87	121	16	PN10	BSP
03075	90 - 3/4"	355	87	124	17	PN10	BSP
03076	90 - 1"	364	87	127	21	PN10	BSP
03077	90 - 1 1/4"	380	87	129	23	PN10	BSP
03078	90 - 1 1/2"	391	87	129	31	PN10	BSP
03079	90 - 2"	425	87	122	38	PN10	BSP
03116	110 - 1/2"	478	104	147	16	PN10	BSP
03080	110 - 3/4"	473	104	147	17	PN10	BSP
03081	110 - 1"	493	104	150	21	PN10	BSP
03082	110 - 1 1/4"	503	104	155	23	PN10	BSP
03083	110 - 1 1/2"	518	104	155	31	PN10	BSP
03084	110 - 2"	554	104	156	38	PN10	BSP
03106	110 - 2 1/2"	630	104	163	44	PN10	BSP
03120	125 - 1/2"	598	101	166	16	PN10	BSP
03085	125 - 3/4"	567	101	166	17	PN10	BSP
03086	125 - 1"	591	101	168	21	PN10	BSP
03087	125 - 1 1/4"	598	101	172	23	PN10	BSP
03088	125 - 1 1/2"	614	101	172	31	PN10	BSP
03089	125 - 2"	625	101	175	38	PN10	BSP
03108	125 - 2 1/2"	702	101	185	44	PN10	BSP



PRODUCT DOCUMENTS



PRODUCT CERTIFICATES

COMPANY CERTIFICATES

