



Clamp saddles

Reinforced clamp saddle 6 screws ITEM 128



Ref.	Description	Net Weight	Vol. (m ³)	Gross Weight	Units Box
1003136	PP CLAMP SADDLE REINF. 140-1/2"	0.993	0.06150	16.80	16
1003140	PP CLAMP SADDLE REINF. 140-3/4"	0.990	0.06150	16.77	16
1003090	PP CLAMP SADDLE REINF. 140-1"	0.991	0.06150	16.82	16
1003091	PP CLAMP SADDLE REINF. 140-1 1/4"	1.003	0.06150	17.01	16
1003092	PP CLAMP SADDLE REINF. 140-1 1/2"	1.014	0.06150	17.19	16
1003093	PP CLAMP SADDLE REINF. 140-2"	1.023	0.06150	17.34	16
1003110	PP CLAMP SADDLE REINF. 140-2 1/2"	1.087	0.06150	18.35	16
1003094	PP CLAMP SADDLE REINF. 140-3"	1.047	0.06150	17.71	16
1003128	PP CLAMP SADDLE REINF. 160-1/2"	1.154	0.06150	19.42	16
1003132	PP CLAMP SADDLE REINF. 160-3/4"	1.153	0.06150	19.42	16
1003095	PP CLAMP SADDLE REINF. 160-1"	1.151	0.06150	19.37	16
1003096	PP CLAMP SADDLE REINF. 160-1 1/4"	1.170	0.06150	19.68	16
1003097	PP CLAMP SADDLE REINF. 160-1 1/2"	1.162	0.06150	19.55	16
1003098	PP CLAMP SADDLE REINF. 160-2"	1.182	0.06150	19.88	16
1003112	PP CLAMP SADDLE REINF. 160-2 1/2"	1.250	0.06150	18.46	14
1003099	PP CLAMP SADDLE REINF. 160-3"	1.205	0.06150	20.25	16
1003473	PP CLAMP SADDLE REINF. 180-1"	1.538	0.03129	12.80	8
1003474	PP CLAMP SADDLE REINF. 180-1 1/4"	1.548	0.03129	12.88	8
1003475	PP CLAMP SADDLE REINF. 180-1 1/2"	1.550	0.03129	12.90	8
1003476	PP CLAMP SADDLE REINF. 180-2"	1.562	0.03129	13.07	8
1003477	PP CLAMP SADDLE REINF. 180-2 1/2"	1.567	0.03129	13.03	8
1003478	PP CLAMP SADDLE REINF. 180-3"	1.611	0.03129	13.48	8



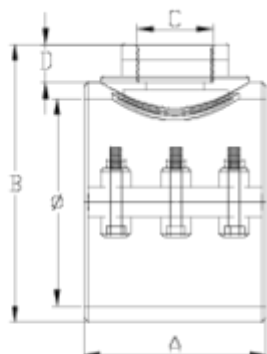


Clamp saddles

Reinforced clamp saddle 6 screws ITEM 128

Ref.	Description	Net Weight	Vol. (m ³)	Gross Weight	Units Box
1003100	PP CLAMP SADDLE REINF. 200-1 1/4"	1.904	0.06150	16.18	8
1003101	PP CLAMP SADDLE REINF. 200-1 1/2"	1.932	0.06150	16.40	8
1003102	PP CLAMP SADDLE REINF. 200-2"	1.956	0.06150	16.59	8
1003114	PP CLAMP SADDLE REINF. 200-2 1/2"	2.019	0.06150	17.10	8
1003103	PP CLAMP SADDLE REINF. 200-3"	1.958	0.06150	16.61	8
1003104	PP CLAMP SADDLE REINF. 200-4"	2.020	0.06150	17.10	8





ITEM 128 | Reinforced clamp saddle 6 screws

Código	f tubo - C	Peso (g)	A	B	D	PN	TIPO ROSCA
03136	140 - 1/2"	1048	134	185	16	PN10	BSP
03140	140 - 3/4"	1054.6	134	185	17	PN10	BSP
03090	140 - 1"	1007.8	134	190	21	PN10	BSP
03091	140 - 1 1/4"	1016.8	134	195	23	PN10	BSP
03092	140 - 1 1/2"	1017.4	134	195	31	PN10	BSP
03093	140 - 2"	1030.6	134	203	38	PN10	BSP
03110	140 - 2 1/2"	1087	134	203	44	PN10	BSP
03094	140 - 3"	1067.6	134	112	53	PN10	BSP
03128	160 - 1/2"	1098	136	210	16	PN10	BSP
03132	160 - 3/4"	1104.6	136	210	17	PN10	BSP

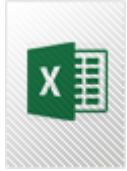


ITEM 128 | Reinforced clamp saddle 6 screws

03095	160 - 1"	1132.8	136	210	21	PN10	BSP
03096	160 - 1 1/4"	1141.8	136	210	23	PN10	BSP
03097	160 - 1 1/2"	1177.4	136	210	31	PN10	BSP
03098	160 - 2"	1190.6	136	218	38	PN10	BSP
03112	160 - 2 1/2"	1247	136	218	44	PN10	BSP
03099	160 - 3"	1222.6	136	218	53	PN10	BSP
03473	180 - 1"	1358.8	152	225	21	PN10	BSP
03474	180 - 1 1/4"	1367.8	152	225	23	PN10	BSP
03475	180 - 1 1/2"	1368.4	152	225	31	PN10	BSP
03476	180 - 2"	1381.6	152	225	38	PN10	BSP
03477	180 - 2 1/2"	1419	152	230	44	PN10	BSP
03478	180-3"	1404.6	152	230	53	PN10	BSP
03100	200 - 1 1/4"	1981.8	173	238	23	PN6	BSP
03101	200 - 1 1/2"	1980.4	173	250	31	PN6	BSP
03102	200 - 2"	1999.6	173	254	38	PN6	BSP
03114	200 - 2 1/2"	2137	173	254	44	PN6	BSP
03103	200 - 3"	2011.6	173	266	53	PN6	BSP
03104	200 - 4"	2076.4	173	266	61	PN6	BSP



PRODUCT DOCUMENTS



PRODUCT CERTIFICATES

COMPANY CERTIFICATES

