

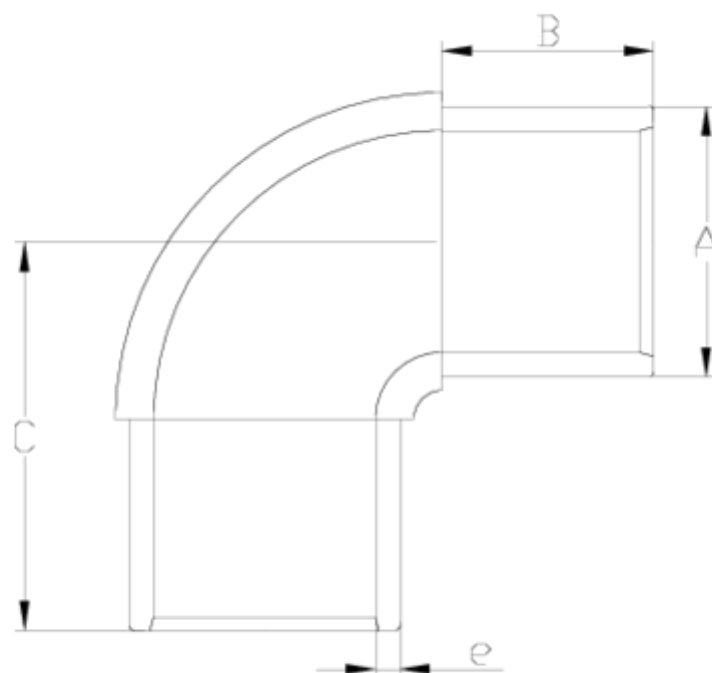


## Electrofusion fittings/Welding fittings

### Injected 90° elbow ITEM 424

Ref.	Description	Net Weight	Vol. (m <sup>3</sup> )	Gross Weight	Units Box
1019405	INJECTED 90° ELBOW 63	0.233	0.03682	4.75	18
1019406	INJECTED 90° ELBOW 75	0.409	0.04717	8.00	18
1019407	INJECTED 90° ELBOW 90	0.583	0.04717	9.98	16
1019408	INJECTED 90° ELBOW 110	1.058	0.08677	17.94	16
1019409	INJECTED 90° ELBOW 125	1.530	0.08677	19.72	12
1019410	INJECTED 90° ELBOW 140	2.149	0.08677	17.50	8
1019411	INJECTED 90° ELBOW 160	2.545	0.06150	11.19	4
1019412	INJECTED 90° ELBOW 180	3.530	0.01782	14.84	4
1019413	INJECTED 90° ELBOW 200	5.973	0.03682	6.52	1
1019414	INJECTED 90° ELBOW 225	7.468	0.04717	8.11	1
1019415	INJECTED 90° ELBOW 250	11.235	0.00000	11.24	1
1019416	INJECTED 90° ELBOW 280	13.520	0.00000	13.52	1
1019417	INJECTED 90° ELBOW 315	20.060	0.00000	20.06	1





## ITEM 424 | Injected 90° elbow

Código	f tubo-A	Peso (g)	B	C	e	PN	MEDIDA
19405	63	275	56	95	5.8	PN16	MÉTRICO
19406	75	413	72	116	6.8	PN16	MÉTRICO
19407	90	704	78	139	8.199999999999999	PN16	MÉTRICO
19408	110	1145	86	158	10	PN16	MÉTRICO
19409	125	1609	104	180	11.4	PN16	MÉTRICO
19410	140	1920	119	198	12.7	PN16	MÉTRICO
19411	160	3100	117	210	14.6	PN16	MÉTRICO
19412	180	4319	116	222	16.4	PN16	MÉTRICO
19413	200	5733	128	250	18.2	PN16	MÉTRICO
19414	225	7780	136	269	20.5	PN16	MÉTRICO



## ITEM 424 | Injected 90° elbow

19415	250	11091	180	307	22.7	PN16	MÉTRICO
19416	280	15286	200	340	25.4	PN16	MÉTRICO
19417	315	21960	210	370	28.6	PN16	MÉTRICO



## PRODUCT DOCUMENTS



## PRODUCT CERTIFICATES

## COMPANY CERTIFICATES

