

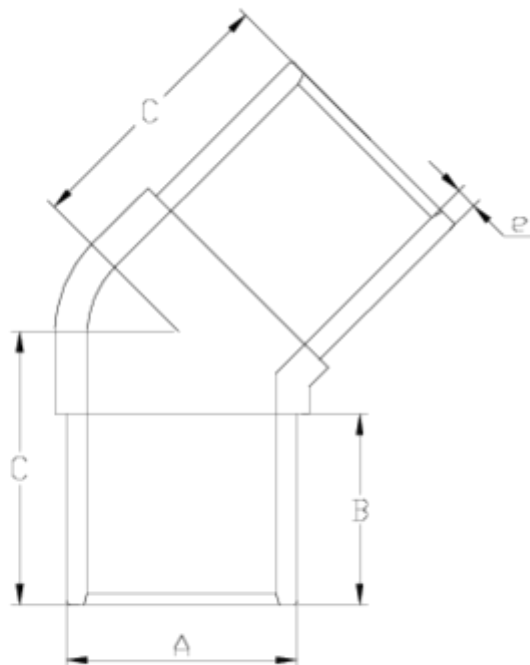


Electrofusion fittings/Welding fittings

Injected 45° elbow ITEM 426

Ref.	Description	Net Weight	Vol. (m ³)	Gross Weight	Units Box
1019505	INJECTED 45° ELBOW 63	0.179	0.03682	3.78	18
1019506	INJECTED 45° ELBOW 75	0.347	0.03682	6.91	18
1019507	INJECTED 45° ELBOW 90	0.600	0.04717	10.36	16
1019508	INJECTED 45° ELBOW 110	0.838	0.08678	14.43	16
1019509	INJECTED 45° ELBOW 125	1.017	0.06150	13.12	12
1019510	INJECTED 45° ELBOW 140	1.429	0.08678	12.11	8
1019511	INJECTED 45° ELBOW 160	1.880	0.04879	8.80	4
1019512	INJECTED 45° ELBOW 180	3.362	0.06347	14.24	4
1019513	INJECTED 45° ELBOW 200	4.462	0.03129	4.93	1
1019514	INJECTED 45° ELBOW 225	6.730	0.00000	6.73	1
1019515	INJECTED 45° ELBOW 250	5.814	0.00000	5.81	1





ITEM 426 | Injected 45° elbow

Código	f tubo-A	Peso (g)	B	C	e	PN	MEDIDA
19505	63	300	56	82	5.8	PN16	MÉTRICO
19506	75	346	75	96	6.8	PN16	MÉTRICO
19507	90	578	84	120	8.199999999999999	PN16	MÉTRICO
19508	110	931	91	129	10	PN16	MÉTRICO
19509	125	1286	101	147	11.4	PN16	MÉTRICO
19510	140	1600	104	153	12.7	PN16	MÉTRICO
19511	160	2461	113	169	14.6	PN16	MÉTRICO
19512	180	3283	120	186	16.4	PN16	MÉTRICO
19513	200	4371	127	201	18.2	PN16	MÉTRICO
19514	225	6013	134	218	20.5	PN16	MÉTRICO



ITEM 426 | Injected 45° elbow

19515	250	8541	155	217	22.7	PN16	MÉTRICO
-------	-----	------	-----	-----	------	------	---------



PRODUCT DOCUMENTS



PRODUCT CERTIFICATES

COMPANY CERTIFICATES

