

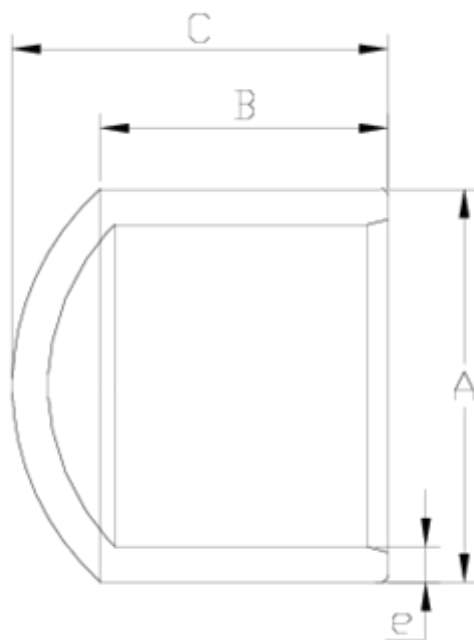


Electrofusion fittings/Welding fittings

Injected cap ITEM 427

Ref.	Description	Net Weight	Vol. (m ³)	Gross Weight	Units Box
1019484	INJECTED CAP 50	0.370	0.00892	6.06	16
1019485	INJECTED CAP 63	0.084	0.01553	1.34	12
1019486	INJECTED CAP 75	0.133	0.01553	1.66	10
1019487	INJECTED CAP 90	0.180	0.01553	2.94	10
1019488	INJECTED CAP 110	0.402	0.03129	3.79	8
1019489	INJECTED CAP 125	0.560	0.03129	3.38	5
1019490	INJECTED CAP 140	0.732	0.03129	2.77	3
1019491	INJECTED CAP 160	0.995	0.00891	2.18	2
1019492	INJECTED CAP 180	1.360	0.00000	1.36	1
1019493	INJECTED CAP 200	2.120	0.01782	2.37	1
1019494	INJECTED CAP 225	3.025	0.00000	3.03	1
1019495	INJECTED CAP 250	3.347	0.02244	3.84	1
1019496	INJECTED CAP 280	5.560	0.00000	5.56	1
1019497	INJECTED CAP 315	7.176	0.03682	7.73	1





ITEM 427 | Injected cap

Código	f tubo-A	Peso (g)	B	C	e	PN	MEDIDA
19484	50	50	58	74	4.6	PN16	MÉTRICO
19485	63	85	66	79	5.8	PN16	MÉTRICO
19486	75	145	67	79	6.8	PN16	MÉTRICO
19487	90	240	73	93	8.199999999999999	PN16	MÉTRICO
19488	110	387	80	105	10	PN16	MÉTRICO
19489	125	546	95	124	11.4	PN16	MÉTRICO
19490	140	835	110	140	12.7	PN16	MÉTRICO
19491	160	1026	121	152	14.6	PN16	MÉTRICO
19492	180	1369	134	169	16.4	PN16	MÉTRICO
19493	200	1839	140	184	18.2	PN16	MÉTRICO



ITEM 427 | Injected cap

19494	225	2500	160	200	20.5	PN16	MÉTRICO
19495	250	3927	152	230	22.7	PN16	MÉTRICO
19496	280	5344	162	257	25.4	PN16	MÉTRICO
19497	315	7176	167	262	28.6	PN16	MÉTRICO



PRODUCT DOCUMENTS



PRODUCT CERTIFICATES

COMPANY CERTIFICATES

