

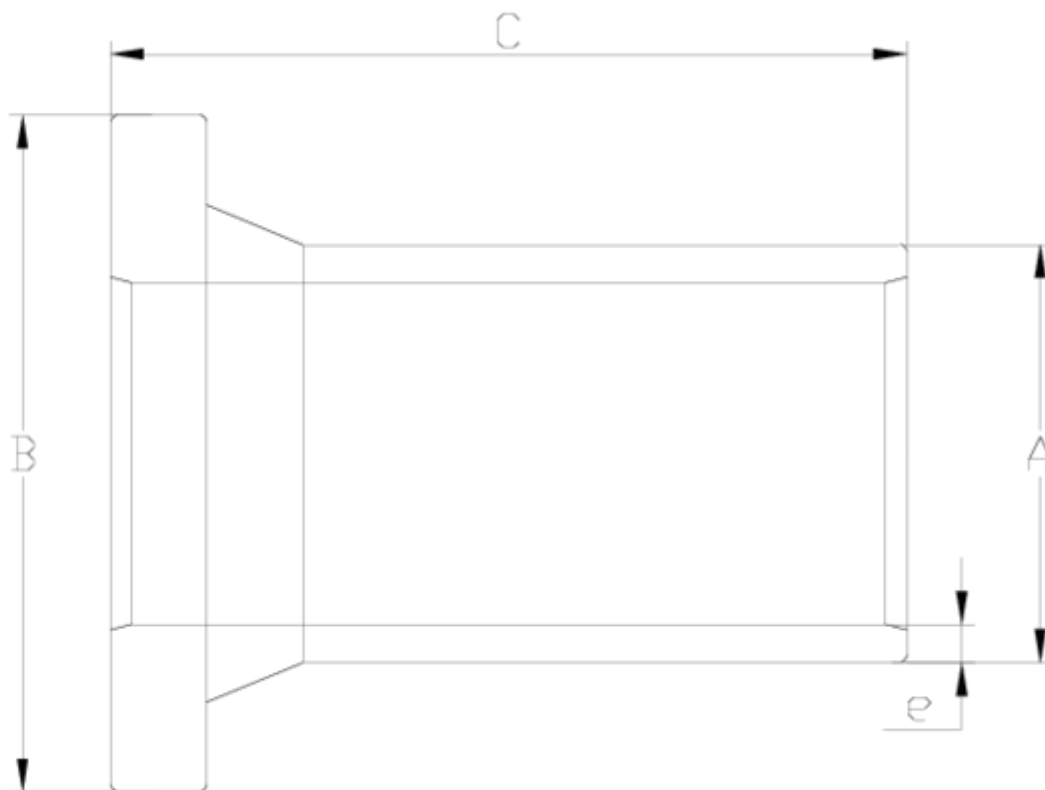


Electrofusion fittings/Welding fittings

Injected adaptor ITEM 163

Ref.	Description	Net Weight	Vol. (m ³)	Gross Weight	Units Box
1019096	ELECTROFUSION ADAPTOR 63	0.207	0.02243	3.06	12
1019097	ELECTROFUSION ADAPTOR 75	0.295	0.03129	4.12	12
1019098	ELECTROFUSION ADAPTOR 90	0.473	0.03682	6.23	12
1019099	ELECTROFUSION ADAPTOR 110	0.613	0.03129	5.48	8
1019100	ELECTROFUSION ADAPTOR 125	0.899	0.02244	4.14	4
1019101	ELECTROFUSION ADAPTOR 140	1.236	0.03682	5.50	4
1019102	ELECTROFUSION ADAPTOR 160	1.651	0.04117	6.60	4
1019103	ELECTROFUSION ADAPTOR 180	1.870	0.04117	8.36	4
1019104	ELECTROFUSION ADAPTOR 200	2.695	0.06347	11.57	4
1019105	ELECTROFUSION ADAPTOR 225	2.969	0.06150	12.80	4
1019106	ELECTROFUSION ADAPTOR 250	4.547	0.03129	5.12	1
1019107	ELECTROFUSION ADAPTOR 315	7.660	0.04117	8.30	1
1019108	ELECTROFUSION ADAPTOR 355	9.018	0.06347	9.88	1





ITEM 163 | Injected adaptor

Código	f tubo-A	Peso (g)	C	D	e	PN	MEDIDA
19096	63	145	120	102	5.8	PN16	MÉTRICO
19097	75	300	130	122	6.8	PN16	MÉTRICO
19098	90	440	145	138	8.199999999999999	PN16	MÉTRICO
19099	110	690	155	158	10	PN16	MÉTRICO
19100	125	925	170	158	11.4	PN16	MÉTRICO
19101	140	1285	175	188	12.7	PN16	MÉTRICO
19102	160	1710	185	212	14.6	PN16	MÉTRICO
19103	180	1905	195	212	16.4	PN16	MÉTRICO
19104	200	3065	205	268	18.2	PN16	MÉTRICO
19105	225	3415	215	268	20.5	PN16	MÉTRICO



ITEM 163 | Injected adaptor

19106	250	5140	245	320	22.7	PN16	MÉTRICO
19107	315	8125	260	370	28.6	PN16	MÉTRICO
19108	355	9018	223	435	35.2	PN16	MÉTRICO



PRODUCT DOCUMENTS



PRODUCT CERTIFICATES

COMPANY CERTIFICATES

