



## Colliers de prise

# Collier de prise double renforcé 6 vis ITEM 134



Réf.	Description	P. Net	Vol. (m³)	P. Brut	Lot
1003138	COLLIER PRISE DOUBLE PP RENF. 140-1/2"	1.076	0.06150	18.20	16
1003142	COLLIER PRISE DOUBLE PP RENF. 140-3/4"	1.082	0.06150	17.88	16
1003339	COLLIER PRISE DOUBLE PP RENF. 140-1"	1.061	0.06150	17.93	16
1003340	COLLIER PRISE DOUBLE PP RENF. 140-1 1/4"	1.131	0.06150	19.06	16
1003341	COLLIER PRISE DOUBLE PP RENF. 140-1 1/2"	1.111	0.06150	18.74	16
1003342	COLLIER PRISE DOUBLE PP RENF. 140-2"	1.098	0.06150	18.48	16
1003343	COLLIER PRISE DOUBLE PP RENF. 140-2 1/2"	1.278	0.06150	21.42	16
1003344	COLLIER PRISE DOUBLE PP RENF. 140-3"	1.191	0.06150	20.06	16
1003130	COLLIER PRISE DOUBLE PP RENF. 160-1/2"	1.188	0.06150	19.99	16
1003134	COLLIER PRISE DOUBLE PP RENF. 160-3/4"	1.179	0.06150	19.84	16
1003345	COLLIER PRISE DOUBLE PP RENF. 160-1"	1.221	0.06150	20.50	16
1003346	COLLIER PRISE DOUBLE PP RENF. 160-1 1/4"	1.237	0.06150	20.76	16
1003347	COLLIER PRISE DOUBLE PP RENF. 160-1 1/2"	1.235	0.06150	20.72	16
1003348	COLLIER PRISE DOUBLE PP RENF. 160-2"	1.273	0.06150	21.37	16
1003349	COLLIER PRISE DOUBLE PP RENF. 160-2 1/2"	1.411	0.06150	20.72	12
1003350	COLLIER PRISE DOUBLE PP RENF. 160-3"	1.295	0.08677	21.74	16
1003493	COLLARIN TOMA DOBLE REF. 180-1"	1.631	0.03129	13.54	8
1003494	COLLARIN TOMA DOBLE REF. 180-1 1/4"	1.651	0.03129	13.71	8
1003495	COLLARIN TOMA DOBLE REF. 180-1 1/2"	1.656	0.03129	13.75	8
1003351	COLLIER PRISE DOUBLE PP RENF. 200-1 1/4"	2.068	0.06150	17.51	8
1003352	COLLIER PRISE DOUBLE PP RENF. 200-1 1/2"	2.060	0.06150	17.44	8
1003353	COLLIER PRISE DOUBLE PP RENF. 200-2"	2.104	0.06150	17.83	8





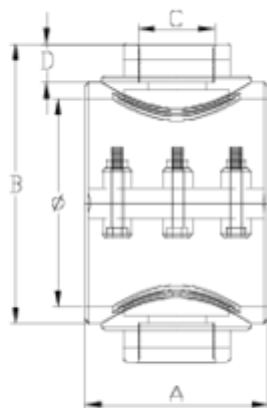
## Colliers de prise

# Collier de prise double renforcé 6 vis ITEM 134



Réf.	Description	P. Net	Vol. (m <sup>3</sup> )	P. Brut	Lot
1003354	COLLIER PRISE DOUBLE PP RENF. 200-2 1/2"	2.238	0.06150	18.87	8
1003355	COLLIER PRISE DOUBLE PP RENF. 2003"	2.146	0.06150	18.17	8
1003356	COLLIER PRISE DOUBLE PP RENF. 200-4"	2.294	0.06150	19.35	6
1003496	COLLARIN TOMA DOBLE REF. 180-2"	1.666	0.03129	13.83	8
1003497	COLLARIN TOMA DOBLE REF. 180-2 1/2"	1.689	0.03129	14.01	8
1003498	COLLARIN TOMA DOBLE REF. 180-3"	1.702	0.03129	14.11	8





## ITEM 134 | Collier de prise double renforcé 6 vis

Código	f tubo - C	Peso (g)	A	B	D	PN	TIPO ROSCA
03138	140 - 1/2"	1097.6	134	185	16	PN10	BSP
03142	140 - 3/4"	1106	134	185	17	PN10	BSP
03339	140 - 1"	1060.4	134	190	21	PN10	BSP
03340	140 - 1 1/4"	1073.6	134	195	23	PN10	BSP
03341	140 - 1 1/2"	1079.6	134	195	31	PN10	BSP
03342	140 - 2"	1096.4	134	203	38	PN10	BSP
03343	140 - 2 1/2"	1161.2	134	203	44	PN10	BSP
03344	140 - 3"	1146.4	134	112	53	PN10	BSP
03130	160 - 1/2"	1149.6	136	210	16	PN10	BSP
03134	160 - 3/4"	1158	136	210	17	PN10	BSP



## ITEM 134 | Collier de prise double renforcé 6 vis

03345	160 - 1"	1190.4	136	210	21	<b>PN10</b>	BSP
03346	160 - 1 1/4"	1203.6	136	210	23	<b>PN10</b>	BSP
03347	160 - 1 1/2"	1246	136	210	31	<b>PN10</b>	BSP
03348	160 - 2"	1262.8	136	218	38	<b>PN10</b>	BSP
03349	160 - 2 1/2"	1327.6	136	218	44	<b>PN10</b>	BSP
03350	160 - 3"	1307.6	136	218	53	<b>PN10</b>	BSP
03493	180 - 1"	1443.6	152	234	21	<b>PN10</b>	BSP
03494	180 - 1 1/4"	1461.6	152	234	23	<b>PN10</b>	BSP
03495	180 - 1 1/2"	1462.8	152	234	31	<b>PN10</b>	BSP
03496	180 - 2"	1489.2	152	244	38	<b>PN10</b>	BSP
03497	180 - 2 1/2"	1564	152	244	44	<b>PN10</b>	BSP
03498	180-3"	1535.2	152	260	53	<b>PN10</b>	BSP
03351	200 - 1 1/4"	2077.2	173	244	23	<b>PN6</b>	BSP
03352	200 - 1 1/2"	2081.12	173	250	31	<b>PN6</b>	BSP
03353	200 - 2"	2104.16	173	254	38	<b>PN6</b>	BSP
03354	200 - 2 1/2"	2253.2	173	254	44	<b>PN6</b>	BSP
03355	200 - 3"	2128.16	173	266	53	<b>PN6</b>	BSP
03356	200 - 4"	2200.16	173	266	61	<b>PN6</b>	BSP





## DOCUMENTS PRODUIT



## CERTIFICATS DE PRODUIT

## CERTIFICATS D'ENTREPRISE

