



## Clamp saddles

# Reinforced double clamp saddle 4 screws ITEM 135



Ref.	Description	Net Weight	Vol. (m <sup>3</sup> )	Gross Weight	Units Box
1003146	PP DOUBLE CLAMP SADDLE REINF. 50-1 1/4"	0.339	0.06149	16.74	45
1003310	PP DOUBLE CLAMP SADDLE REINF. 63-1/2"	0.278	0.04117	17.76	60
1003311	PP DOUBLE CLAMP SADDLE REINF. 63-3/4"	0.263	0.04117	16.83	60
1003312	PP DOUBLE CLAMP SADDLE REINF. 63-1"	0.293	0.04880	18.62	60
1003313	PP DOUBLE CLAMP SADDLE REINF. 63-1 1/4"	0.325	0.04880	20.57	60
1003314	PP DOUBLE CLAMP SADDLE REINF. 63-1 1/2"	0.355	0.06149	22.22	60
1003315	PP DOUBLE CLAMP SADDLE REINF. 75-1/2"	0.341	0.04460	12.93	35
1003316	PP DOUBLE CLAMP SADDLE REINF. 75-3/4"	0.361	0.04460	13.38	35
1003317	PP DOUBLE CLAMP SADDLE REINF. 75-1"	0.378	0.06347	14.05	35
1003318	PP DOUBLE CLAMP SADDLE REINF. 75-1 1/4"	0.414	0.06150	23.31	35
1003319	PP DOUBLE CLAMP SADDLE REINF. 75-1 1/2"	0.424	0.06150	23.92	35
1003320	PP DOUBLE CLAMP SADDLE REINF. 75-2"	0.511	0.06347	18.72	35
1003321	PP DOUBLE CLAMP SADDLE REINF. 90-1/2"	0.389	0.04460	12.40	30
1003322	PP DOUBLE CLAMP SADDLE REINF. 90-3/4"	0.653	0.04117	20.55	30
1003323	PP DOUBLE CLAMP SADDLE REINF. 90-1"	0.398	0.06150	12.90	30
1003324	PP DOUBLE CLAMP SADDLE REINF. 90-1 1/4"	0.447	0.06150	21.11	30
1003325	PP DOUBLE CLAMP SADDLE REINF. 90-1 1/2"	0.464	0.06150	14.89	30
1003326	PP DOUBLE CLAMP SADDLE REINF. 90-2"	0.544	0.06150	17.28	30
1003118	PP DOUBLE CLAMP SADDLE REINF. 110-1/2"	0.508	0.06149	13.62	25
1003327	PP DOUBLE CLAMP SADDLE REINF. 110-3/4"	0.485	0.06347	13.33	25
1003328	PP DOUBLE CLAMP SADDLE REINF. 110-1"	0.501	0.06347	13.75	25
1003329	PP DOUBLE CLAMP SADDLE REINF. 110-1 1/4"	0.549	0.08678	14.93	25



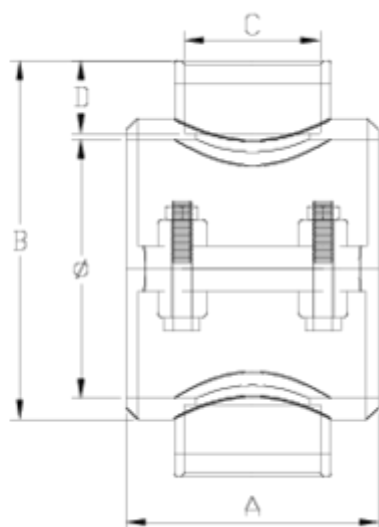


## Clamp saddles

### Reinforced double clamp saddle 4 screws ITEM 135

Ref.	Description	Net Weight	Vol. (m <sup>3</sup> )	Gross Weight	Units Box
1003330	PP DOUBLE CLAMP SADDLE REINF. 110-1 1/2"	0.585	0.06347	18.53	25
1003331	PP DOUBLE CLAMP SADDLE REINF. 110-2"	1.157	0.06347	11.94	20
1003332	PP DOUBLE CLAMP SADDLE REINF. 110-2 1/2"	0.834	0.06149	17.25	20
1003122	PP DOUBLE CLAMP SADDLE REINF. 125-1/2"	0.627	0.06150	18.52	28
1003333	PP DOUBLE CLAMP SADDLE REINF. 125-3/4"	0.591	0.06150	12.78	28
1003334	PP DOUBLE CLAMP SADDLE REINF. 125-1"	0.637	0.06150	13.74	28
1003335	PP DOUBLE CLAMP SADDLE REINF. 125-1 1/4"	0.658	0.06150	14.26	28
1003336	PP DOUBLE CLAMP SADDLE REINF. 125-1 1/2"	0.681	0.06150	14.58	28
1003337	PP DOUBLE CLAMP SADDLE REINF. 125-2"	0.710	0.06150	18.69	25
1003338	PP DOUBLE CLAMP SADDLE REINF. 125-2 1/2"	0.881	0.08678	23.01	25





## ITEM 135 | Reinforced double clamp saddle 4 screws

Código	f tubo - C	Peso (g)	A	B	D	PN	TIPO ROSCA
03146	50 - 1 1/4"	357.68	70	123	23	PN16	BSP
03310	63 - 1/2"	281.44	70	115	16	PN16	BSP
03311	63 - 3/4"	284.32	70	115	17	PN16	BSP
03312	63 - 1"	299.28	70	123	21	PN16	BSP
03313	63 - 1 1/4"	314	70	123	23	PN16	BSP
03314	63 - 1 1/2"	337.44	70	123	31	PN16	BSP
03315	75 - 1/2"	371.04	85	135	16	PN10	BSP
03316	75 - 3/4"	366.08	85	130	17	PN10	BSP
03317	75 - 1"	378.8	85	135	21	PN10	BSP
03318	75 - 1 1/4"	402.48	85	139	23	PN10	BSP



## ITEM 135 | Reinforced double clamp saddle 4 screws

03319	75 - 1 1/2"	414.72	85	139	31	<b>PN10</b>	BSP
03320	75 - 2"	461.92	85	147	38	<b>PN10</b>	BSP
03321	90 - 1/2"	396.8	87	144	16	<b>PN10</b>	BSP
03322	90 - 3/4"	406.4	87	144	17	<b>PN10</b>	BSP
03323	90 - 1"	419.12	87	150	21	<b>PN10</b>	BSP
03324	90 - 1 1/4"	440.56	87	154	23	<b>PN10</b>	BSP
03325	90 - 1 1/2"	457.28	87	154	31	<b>PN10</b>	BSP
03326	90 - 2"	498.88	87	162	38	<b>PN10</b>	BSP
03118	110 - 1/2"	542.4	104	164	16	<b>PN10</b>	BSP
03327	110 - 3/4"	538.5599999999999	104	164	17	<b>PN10</b>	BSP
03328	110 - 1"	563.6	104	170	21	<b>PN10</b>	BSP
03329	110 - 1 1/4"	578.3200000000001	104	180	23	<b>PN10</b>	BSP
03330	110 - 1 1/2"	599.52	104	180	31	<b>PN10</b>	BSP
03331	110 - 2"	643.36	104	182	38	<b>PN10</b>	BSP
03332	110 - 2 1/2"	733.76	104	196	44	<b>PN10</b>	BSP
03122	125 - 1/2"	676.8	101	185	16	<b>PN10</b>	BSP
03333	125 - 3/4"	643.84	101	185	17	<b>PN10</b>	BSP
03334	125 - 1"	673.36	101	189	21	<b>PN10</b>	BSP
03335	125 - 1 1/4"	684.72	101	197	23	<b>PN10</b>	BSP
03336	125 - 1 1/2"	707.04	101	197	31	<b>PN10</b>	BSP
03337	125 - 2"	722.88	101	203	38	<b>PN10</b>	BSP
03338	125 - 2 1/2"	814.4	101	223	44	<b>PN10</b>	BSP



## PRODUCT DOCUMENTS



## PRODUCT CERTIFICATES

## COMPANY CERTIFICATES

