

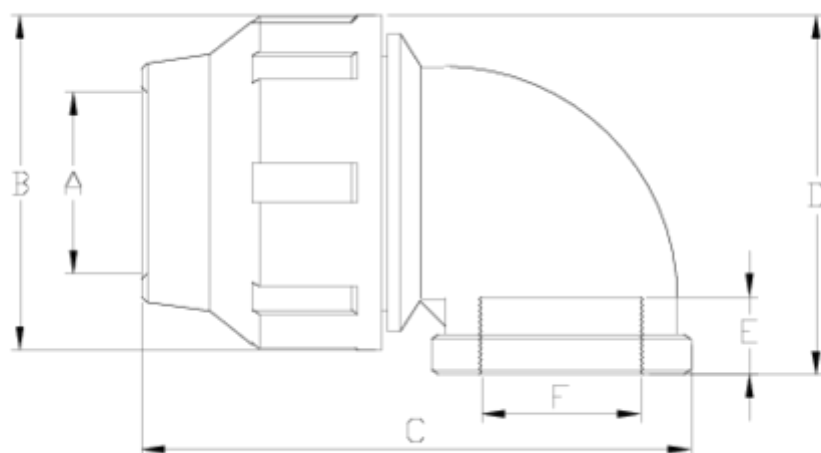


## PP pressure fittings

### 90° elbow, female threaded ITEM 105

Ref.	Description	Net Weight	Vol. (m <sup>3</sup> )	Gross Weight	Units Box
1012066	90° ELBOW, FEM. THREAD 20-1/2"	0.055	0.02243	4.93	80
1012067	90° ELBOW, FEM. THREAD 25-3/4"	0.083	0.03129	7.21	80
1012068	90° ELBOW, FEM. THREAD 32-1"	0.125	0.03129	8.70	65
1012069	90° ELBOW, FEM. THREAD 40-1 1/4"	0.231	0.03682	9.77	40
1012070	90° ELBOW, FEM. THREAD 50-1 1/2"	0.342	0.06347	14.46	40
1012071	90° ELBOW, FEM. THREAD 63-2"	0.627	0.06347	15.84	24
1012374	CODO 90° ROSCA HEMBRA 32-3/4"	0.132	0.03129	9.13	65





## ITEM 105 | 90° elbow, female threaded

Código	f tubo - F	Peso (g)	A	B	C	D	E	PN	TIPO ROSCA
12066	20 - 1/2"	54	21	46	87	57	20	PN16	BSP
12067	25 - 3/4"	92	26	55	97	65	20	PN16	BSP
12374	32 - 3/4"	127	33	64	111	76	20	PN16	BSP
12068	32 - 1"	123	33	64	111	76	22	PN16	BSP
12069	40 - 1 1/4"	217	42	76	138	91	25	PN16	BSP
12070	50 - 1 1/2"	324	51	91	153	106	25	PN16	BSP
12071	63 - 2"	561	64	109	189	120	29	PN16	BSP
12135	75 - 2 1/2"	992	77	133	220	142	34	PN10	BSP
12136	90 - 3"	1740	92	159	267	165	42	PN10	BSP
12137	110 - 4"	2423	112	183	303	201	51	PN10	BSP



## ITEM 105 | 90° elbow, female threaded



## PRODUCT DOCUMENTS



## PRODUCT CERTIFICATES

## COMPANY CERTIFICATES

