

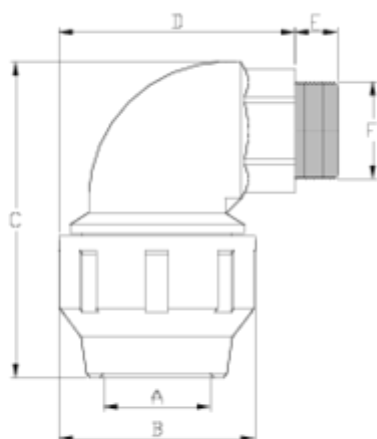


## Raccords PP sous pression

### Coude 90° fileté ITEM 104

Réf.	Description	P. Net	Vol. (m <sup>3</sup> )	P. Brut	Lot
1012091	COUDE MALE 20-1/2"	0.060	0.02244	5.32	80
1012092	COUDE MALE 25-3/4"	0.087	0.02244	4.85	50
1012093	COUDE MALE 32-1"	0.137	0.03129	7.43	50
1012094	COUDE MALE 40-1 1/4"	0.235	0.03648	7.63	30
1012095	COUDE MALE 50-1 1/2"	0.398	0.03648	8.55	20
1012096	COUDE MALE 63-2"	0.727	0.04717	11.54	15
1012097	COUDE MALE 75-2 1/2"	1.113	0.06150	12.06	10
1012098	COUDE MALE 90-3"	1.898	0.03129	8.17	4
1012099	COUDE MALE 110-4"	2.831	0.03129	6.24	2
1012361	COUDE MALE 25-1/2"	0.090	0.02243	4.92	50
1012364	COUDE MALE 32-3/4"	0.135	0.03129	7.38	50





## ITEM 104 | Coude 90° fileté

Código	f tubo - F	Peso (g)	A	B	C	D	E	PN	TIPO ROSCA
12091	20 - 1/2"	60	21	46	83	77	15	PN16	BSP
12361	25 - 1/2"	87	26	55	92	81	15	PN16	BSP
12092	25 - 3/4"	90	26	55	92	81	15	PN16	BSP
12364	32 - 3/4"	129	33	64	105	94	15	PN16	BSP
12093	32 - 1"	134	33	64	105	94	17	PN16	BSP
12094	40 - 1 1/4"	227	42	76	126	104	21	PN16	BSP
12095	50 - 1 1/2"	370	51	91	145	128	21	PN16	BSP
12096	63 - 2"	612	64	109	189	156	29	PN16	BSP
12097	75 - 2 1/2"	1057	77	133	212	178	30	PN10	BSP
12098	90 - 3"	1919	92	159	263	208	35	PN10	BSP



## ITEM 104 | Coude 90° fileté

12099

110 - 4"

2769

112

183

303

244

41

PN10

BSP



Pol. Ind. Plá Vallonga,  
c/ Agua, 28  
03006 ALICANTE (España)



+34 965 11 42 82



+34 965 11 48 62



tecnicocomercial@hidroten.es



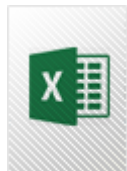
Service d'Attention  
Technique Commerciale  
+34 966 105 888



[www.hidroten.es](http://www.hidroten.es)



## DOCUMENTS PRODUIT



## CERTIFICATS DE PRODUIT

## CERTIFICATS D'ENTREPRISE

