

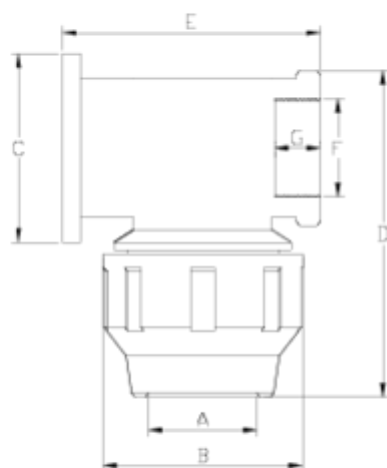


PP pressure fittings

Griffin elbow ITEM 113

Ref.	Description	Net Weight	Vol. (m ³)	Gross Weight	Units Box
1012160	PE GRIFFIN ELBOW 20-1/2"	0.075	0.03129	6.54	80
1012161	PE GRIFFIN ELBOW 25-3/4"	0.116	0.03129	7.52	60
1012162	PE GRIFFIN ELBOW 32-1"	0.168	0.03648	8.97	50
1012163	PE GRIFFIN ELBOW 40-1 1/4"	0.127	0.06347	6.86	48
1012170	PE GRIFFIN ELBOW, REINF. 20-1/2"	0.080	0.03129	7.01	80
1012171	PE GRIFFIN ELBOW, REINF. 25-3/4"	0.117	0.03129	7.58	60
1012172	PE GRIFFIN ELBOW, REINF. 32-1"	0.176	0.03648	9.41	50
1012173	PE GRIFFIN ELBOW, REINF. 40-1 1/4"	0.320	0.06347	16.21	48





ITEM 113 | Griffin elbow

Código	f tubo - F	Peso (g)	A	B	C	D	E	G	PN	TIPO ROSCA
12160	20 - 1/2"	73	21	46	56	87	60	17	PN16	BSP
12161	25 - 3/4"	108	26	55	62	96	70	20	PN16	BSP
12162	32 - 1"	170	33	64	76	113	78	23	PN16	BSP
12163	40 - 1 1/4"	276	42	76	86	140	98	25	PN16	BSP
12170	20 - 1/2"	83	21	46	56	88	60	17	PN16	BSP
12171	25 - 3/4"	119	26	55	62	97	70	20	PN16	BSP
12172	32 - 1"	184	33	64	76	114	78	23	PN16	BSP
12173	40 - 1 1/4"	295	42	76	86	141	98	25	PN16	BSP



PRODUCT DOCUMENTS



PRODUCT CERTIFICATES

COMPANY CERTIFICATES

