

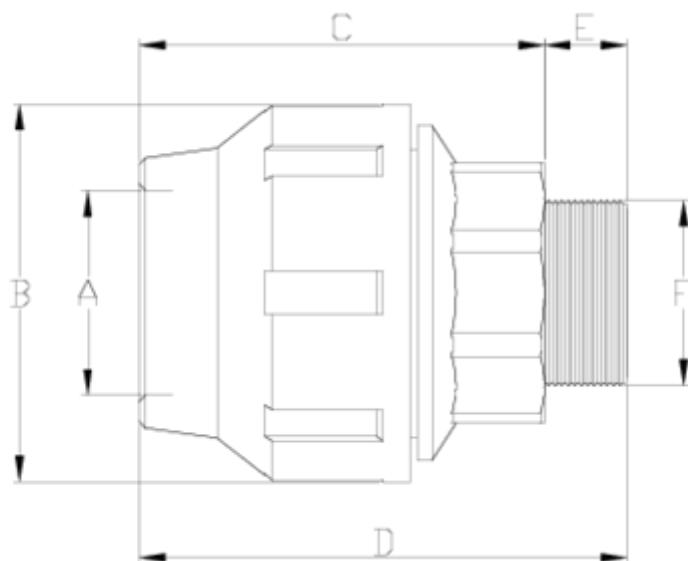


Raccords PP sous pression

Raccord droit mixte-male ITEM 099

Réf.	Description	P. Net	Vol. (m ³)	P. Brut	Lot
1012037	UNION DROIT FILETEE 20-1/2	0.047	0.01553	5.17	100
1012237	UNION,MALE FILETEE 25-1/2"	0.072	0.03129	7.80	100
1012038	UNION DROIT FILETEE 25-3/4	0.072	0.03129	7.81	100
1012238	UNION,MALE FILETEE 25-1"	0.075	0.03129	8.07	100
1012239	UNION DROIT FILETEE 32-3/4	0.107	0.03648	11.30	100
1012039	UNION DROIT FILETEE 32-1"	0.108	0.04460	11.44	100
1012040	UNION DROIT FILETEE 40-1 1/4"	0.192	0.04460	11.37	56
1012041	UNION DROIT FILETEE 50-1 1/2	0.288	0.04460	12.26	40
1012241	ENLACE RECTO MIXTO-MACHO 50-2"	0.302	0.04460	12.82	40
1012042	UNION DROIT FILETEE 63-2"	0.517	0.06150	15.41	28
1012043	UNION DROIT FILETEE 75-2 1/2"	0.861	0.03682	9.16	10
1012246	UNION DROIT FILETEE 75-2"	0.832	0.03682	8.87	10
1012044	UNION DROIT FILETEE 90-3"	1.408	0.03129	7.62	5
1012045	UNION DROIT FILETEE 110-4"	1.946	0.02244	4.38	2
1012236	ENLACE RECTO MIXTO-MACHO 20-3/4"	0.048	0.02243	5.29	100





ITEM 099 | Raccord droit mixte-male

Código	f tubo - F	Peso (g)	A	B	C	D	E	PN	TIPO ROSCA
12037	20 - 1/2"	45	21	46	61	75	14	PN16	BSP
12236	20 - 3/4"	65	21	46	61	77	16	PN16	BSP
12237	25 - 1/2"	72	26	66	66	80	14	PN16	BSP
12038	25 - 3/4"	75	26	55	66	82	16	PN16	BSP
12238	25 - 1"	80	26	55	66	85	19	PN16	BSP
12239	32 - 3/4"	102	33	64	73	89	16	PN16	BSP
12039	32 - 1"	107	33	64	73	92	19	PN16	BSP
12040	40 - 1 1/4"	171	42	76	91	111	20	PN16	BSP
12041	50 - 1 1/2"	272	51	91	97	118	21	PN16	BSP
10241	50 - 2"	280	51	91	97	122	25	PN16	BSP



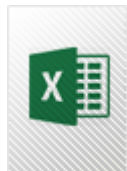
ITEM 099 | Raccord droit mixte-male

12042	63 - 2"	434	64	109	114	139	25	PN16	BSP
10246	75 - 2"	794	77	133	139	164	25	PN10	BSP
12043	75 - 2 1/2"	806	77	133	139	169	30	PN10	BSP
12044	90 - 3"	1378	92	159	169	206	37	PN10	BSP
12045	110 - 4"	1965	112	183	182	222	40	PN10	BSP





DOCUMENTS PRODUIT



CERTIFICATS DE PRODUIT

CERTIFICATS D'ENTREPRISE

